



GRAND PRIX™

The Grand Prix™ was introduced by Fritz Hansen at the Designers' Spring Exhibition at the Danish Museum of Art & Design in Copenhagen, in 1957. Later that year, the chair was displayed at the Triennale in Milan where it received the Grand Prix – the finest distinction of the exhibition. Originally, the Grand Prix chair was introduced with a wooden base.

Today, the chair is available both with a base of wood or chromed steel.



REPUBLIC OF **Fritz Hansen®**

PRODUCT DESCRIPTION

The shell is in pressure molded veneer. The inner veneer is always beech and the outer veneer is available in 2 different natural veneers: oak or walnut, as well as in coloured ash in 2 different colours: white or black. The chair is also available with front or full upholstery in fabric or leather.

The base comes with 4 legs in 2 variants: 14 mm chromed steel tubes (stackable in 3 heights) with leg ferrules of black synthetic material and wooden legs matching the veneer or colour of the shell (non-stackable).

The range of accessories includes linking device, transport dolly, felt glides and underside cover for stacking of upholstered chairs.

DESIGN

Arne Jacobsen, 1957



ARNE JACOBSEN 1902-1971

The collaboration between Arne Jacobsen and Fritz Hansen dates back to 1934. It was not until 1952 however that the team got its breakthrough with the Aní™. It was succeeded by Series 7™ in 1955, thereby enabling both Jacobsen and Fritz Hansen to write their names into furniture history.

Arne Jacobsen was incredibly productive, both as an architect and a designer. At the end of the 1950s he designed the SAS Royal Hotel in Copenhagen, also designing the Egg™, the Swan™, the Swan Sofa™ and Series 3300™ for the same project.

UPHOLSTERY

The upholstery for Grand Prix™ is available in the following selection of fabrics and leathers:

Fritz Hansen Colours:

The Fritz Hansen Colours are created exclusively by Republic of Fritz Hansen's own design team and consist of serene pale pink, warm and earthy terracotta orange and finally deep ocean blue.

Fabrics:

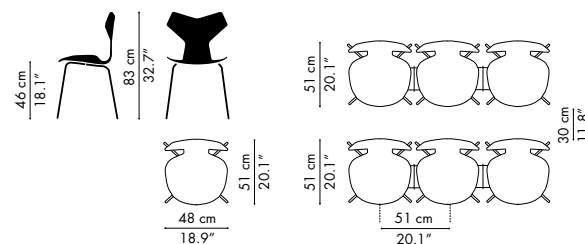
Canvas, Capture, Comfort, Diablo, Fame, Fiord, Divina, Divina Melange, Divina MD, Hallingdal, Remix, Steelcut, Steelcut Trio, Sunniva and Tonus.

Leathers:

Basic, Soft, Natural, White, Optical white, Elegance and Sense.

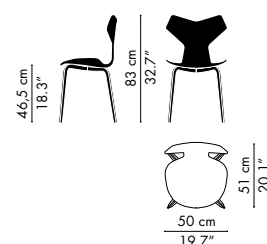
VARIATIONS & DIMENSIONS

3130



3130 is available in three seat heights: 43/46/48 cm | 17.3"/18.1"/18.9".

4130



WARRANTY

A five-year warranty against manufacturing defects in standard products (materials and workmanship). Wear, tear and damage to the product are not covered under this warranty. Claims from end users under the guarantee must be submitted to the vendor from whom the product was purchased. All measurements are indicative.

STANDARD WARRANTY:

5 years

MY REPUBLIC EXTENDED WARRANTY:

5 years: Wooden base, Fabric, Leather: Basic, Soft.

10 years: Chromed base, Shell, Coloured ash, Natural veneer, Leather: Natural, White, Optical white, Elegance, Sense.

To obtain an extended warranty offered through My Republic the products should be registered online. Go to www.fritzhenzen.com/my-republic to register.

ENVIRONMENTAL PRODUCT INFORMATION

Chairs for meetings, conference, dining and private use.

MATERIALS

Shell

The shell is made of laminated, form pressed veneer. The outer veneer is sliced oak or walnut, the inner seven veneer layers are made of beech. The veneer layers are glued together with water based urea-formaldehyde glue. The chairs are also available in coloured ash. Un-upholstered chairs are coated with polyurethane lacquer, which prevents the emission of formaldehyde.

Upholstery

The chairs are also available with upholstery.

- Several textiles are available with EU Eco flower mark.
- Foam is polyurethane (PUR).
- A water-soluble glue is used for bonding of textile to the foam and foam to the shell.

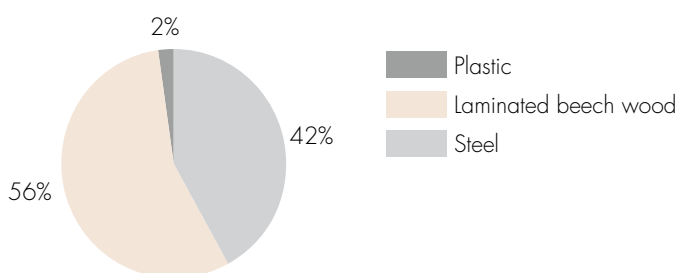
Base

The base is made of either chromed steel tubes, which can be recycled or wooden legs consisting of 23 layers of laminated beech veneer with oak or walnut as outer veneer. The veneer is glued together with water based urea-formaldehyde glue.

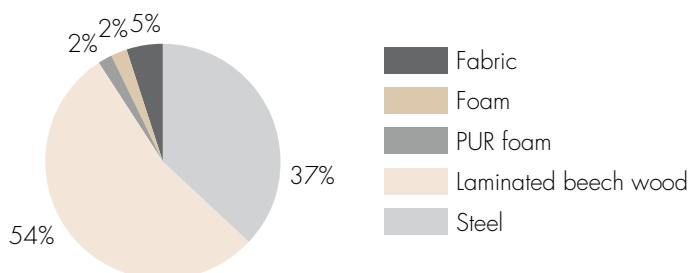
Materials in %

The below figures illustrate the weight allocation between the different materials used. Items with a weight <1% of the total product weight are not included in the figures below. The upholstery percentage may vary depending on the upholstery type.

Models without upholstery:



Models with upholstery:



PACKAGING MATERIAL

PE foam and cardboard are used as protection between stacked chairs. The chairs are covered with a plastic bag and shipped in cardboard. All packaging material can be recycled.

REPAIR, DISPOSAL AND REUSE

In case of repair and disposal the chairs can be disassembled into two parts (shell and base). The base and all other metal parts can be recycled. Check local regulations for recycling in your area and whether there is potential for reuse.

MANUFACTURING PROCESSES

Suppliers

Before Fritz Hansen enters into cooperation with a supplier, their environmental stance is examined as part of the company's quality and environmental management systems.

Chrome surface treatment

Fritz Hansen uses both trivalent chromium (chrome 3) and hexavalent chromium (chrome 6) for chromium plating. Fritz Hansen will convert to solely using trivalent chromium (chrome 3) when the capacity in the industry allows it.

Metal

Production scrap (steel) is collected for recycling.

Foam

Remnants from foam production are granulated wherever possible for recycling.

Plastic

Plastic components are identified with a recycling code whenever possible to facilitate the return of the materials to the recycling stream.

MANAGEMENT SYSTEMS

Environmental System

We are aware of our environmental responsibilities. Therefore, in the autumn of 2004 Fritz Hansen obtained the ISO 14001 certification in the environmental management system. The certification is a guarantee to our customers and the authorities that we comply with the requirements of the ISO 14001:2015 standard.

Quality System

Fritz Hansen is also certified according to the quality system ISO 9001:2015.

Employee Health and Safety

Fritz Hansen aims at meeting or exceeding OSHA standards.

ENVIRONMENTAL PRODUCT CERTIFICATION

GreenGuard

Grand Prix™ is GreenGuard Gold certified. GreenGuard certification is an emission certification for indoor air quality. Products with ultra-low-emitting materials can achieve GreenGuard Gold.

PEFC™ PEFC/09-31-068

Grand Prix™ (3130) in beech, oak and walnut and painted shells are PEFC certified. This PEFC certification ensures the wood is from forests that are managed with respect for the ecological, social and ethical standards.

At the moment all upholstered chairs and Grand Prix (4130) are not PEFC certified.

LONG LIFETIME

A long lifetime of a piece of furniture is an important environmental factor. Fritz Hansen aims to obtain a long lifetime through timeless design and strict requirements for strength and durability.

The chairs complies with the requirements for EN 13761 + EN 1728 + EN 1022 Safety, strength, durability and stability for visitor's chairs non domestic seating.

MORE INFORMATION

Please visit www.fritzhanzen.com for additional environmental information and to download our Perspective on Sustainability & Corporate Environmental Policy.



CHRISTIANSHAVN



BLACK UNI
FABRIC: CHRISTIANSHAVN 1175



DARK GREY
FABRIC: CHRISTIANSHAVN 1174



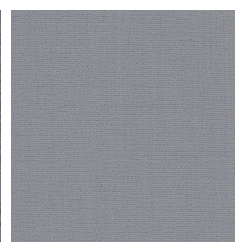
GREY
FABRIC: CHRISTIANSHAVN 1173



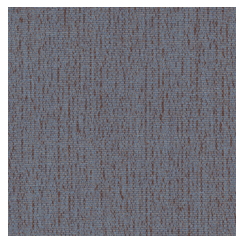
GREY UNI
FABRIC: CHRISTIANSHAVN 1172



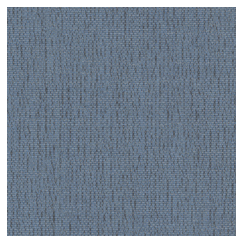
LIGHT GREY
FABRIC: CHRISTIANSHAVN 1171



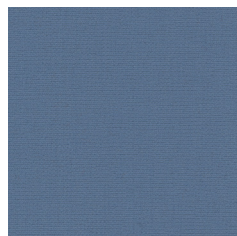
LIGHT GREY UNI
FABRIC: CHRISTIANSHAVN 1170



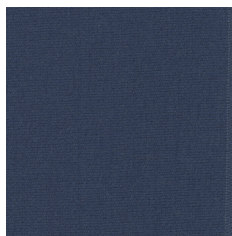
ORANGE/BLUE
FABRIC: CHRISTIANSHAVN 1150



LIGHT BLUE
FABRIC: CHRISTIANSHAVN 1152



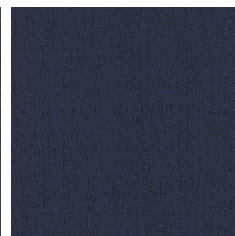
LIGHT BLUE UNI
FABRIC: CHRISTIANSHAVN 1151



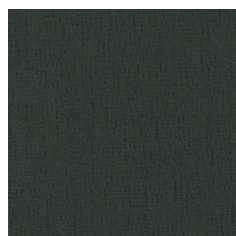
BLUE UNI
FABRIC: CHRISTIANSHAVN 1153



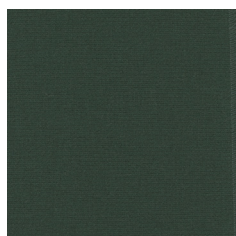
BLUE
FABRIC: CHRISTIANSHAVN 1154



DARK BLUE
FABRIC: CHRISTIANSHAVN 1155



DARK GREEN
FABRIC: CHRISTIANSHAVN 1161



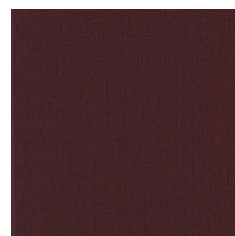
DARK GREEN UNI
FABRIC: CHRISTIANSHAVN 1160



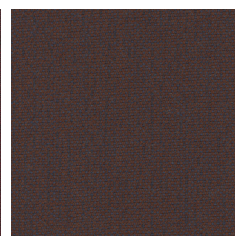
DARK RED UNI
FABRIC: CHRISTIANSHAVN 1142



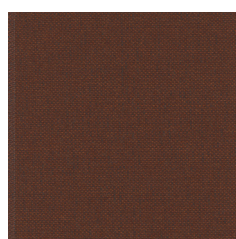
RED
FABRIC: CHRISTIANSHAVN 1141



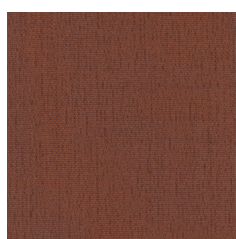
RED UNI
FABRIC: CHRISTIANSHAVN 1140



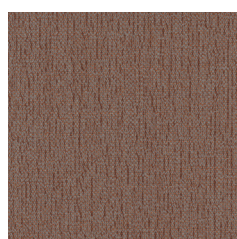
BLUE/ORANGE
FABRIC: CHRISTIANSHAVN 1135



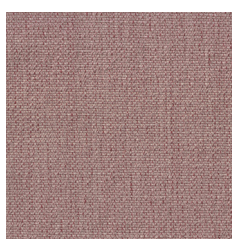
DARK ORANGE
FABRIC: CHRISTIANSHAVN 1134



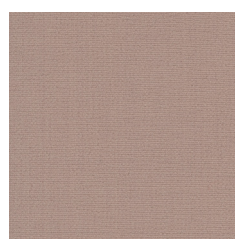
ORANGE
FABRIC: CHRISTIANSHAVN 1133



BEIGE/ORANGE
FABRIC: CHRISTIANSHAVN 1132



ORANGE/RED
FABRIC: CHRISTIANSHAVN 1131



LIGHT RED UNI
FABRIC: CHRISTIANSHAVN 1130



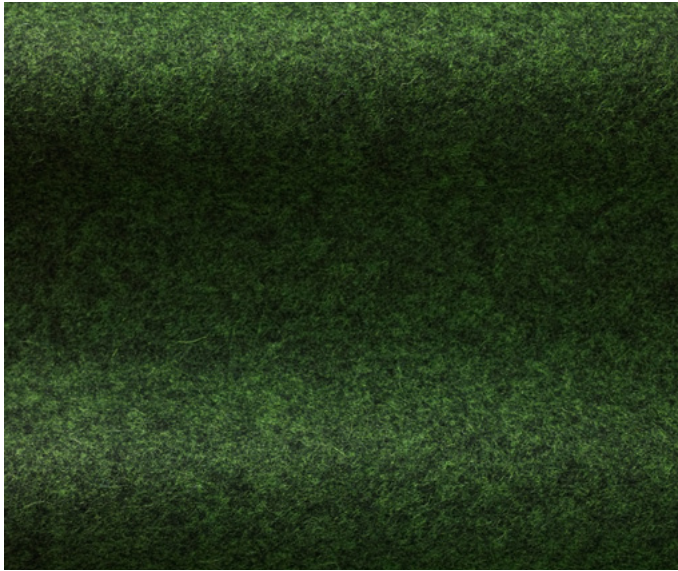
BEIGE
FABRIC: CHRISTIANSHAVN 1121



LIGHT BEIGE
FABRIC: CHRISTIANSHAVN 1120



YELLOW
FABRIC: CHRISTIANSHAVN 1110



Divina Melange 2

"Melange upholstery in neon colours."

Divina Melange has been extremely well received by the market. Following on from this success, we are now adding additional colourways.

Divina Melange is a textile characterised by its lack of texture and nap and consequently the fabric accentuates the dimensions of the furniture, giving prominence to the colours.

Melange means mixture. The existing six grey and beige colourways are produced by mixing varying proportions of either black or brown wool with white wool. The different colours of wool are mixed before the garment is spun.

The new colourways have come about by dipping the two base colours in bold, virtually luminous pigments. The result is 18 coloured melanges.

For further information
www.kvadrat.dk

Divina Melange 2

100% new wool

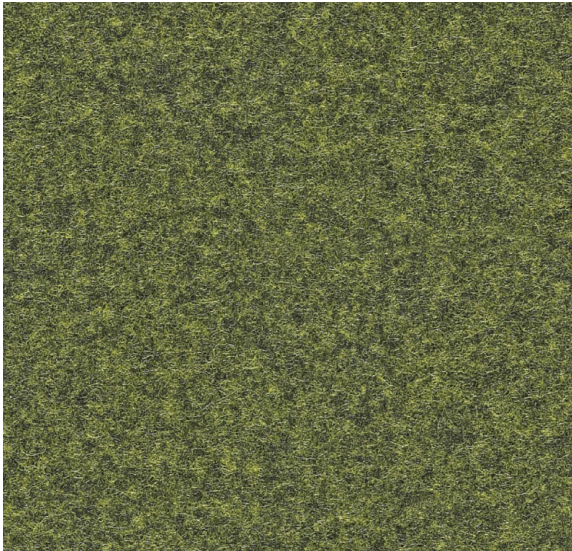
24 colours

150 cm wide

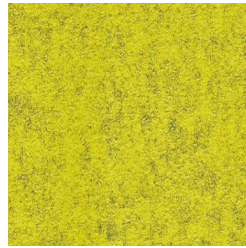
Design: Finn Sködt MDD AGI

Introduced: 1999

Revised: 2004



471



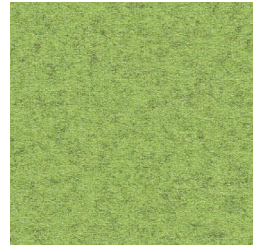
421



971



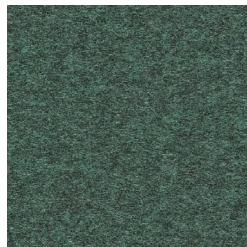
771



920



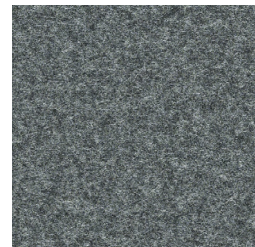
120



871



821



170



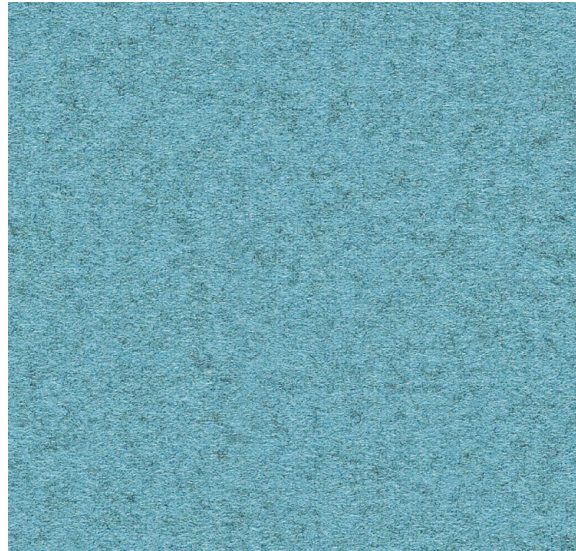
731



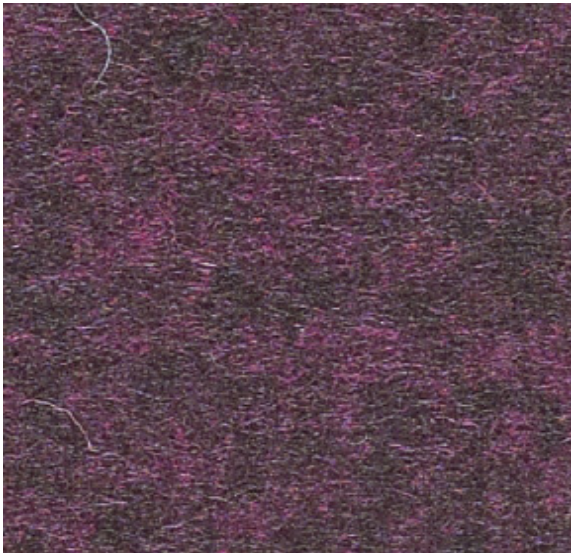
180



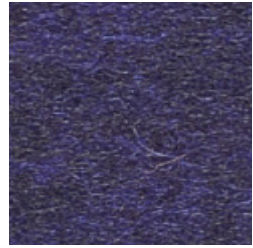
931



721



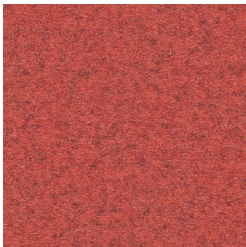
671



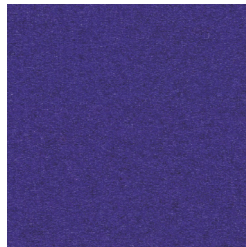
681



220



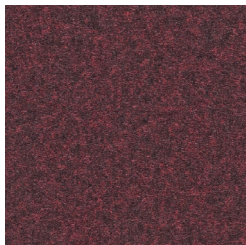
531



631



260



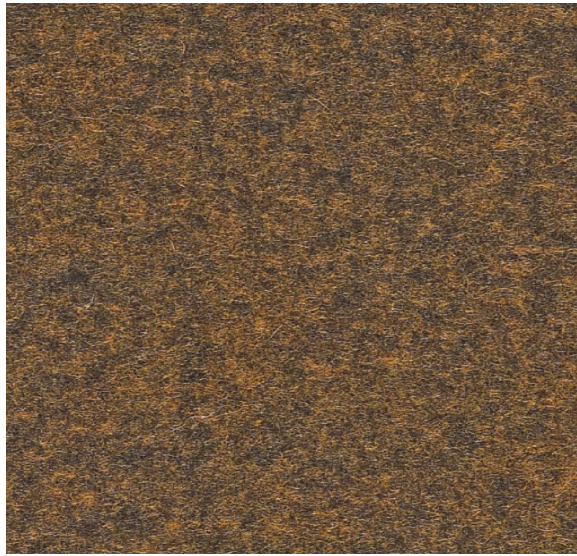
581



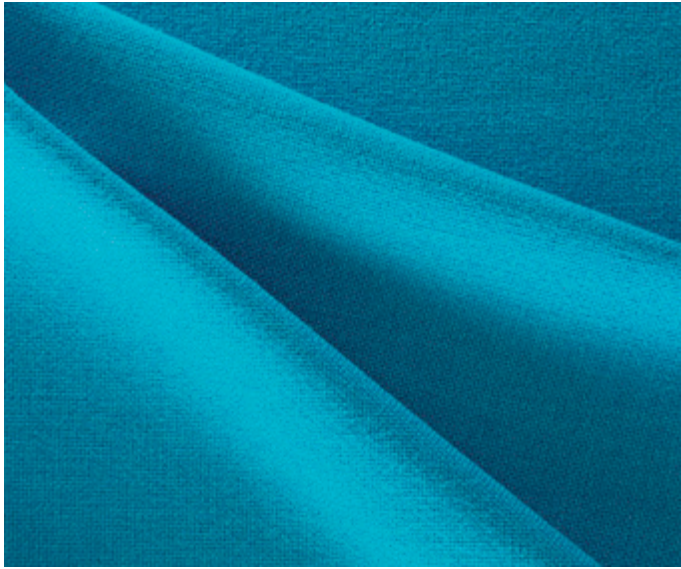
280



521



571



Hallingdal 65

Abrasion

Approximately 100.000 Martindale rubs, EN ISO 12947

Pilling

Note 3, EN ISO 12945

Lightfastness

Note 5-7, ISO 105-B02

Flame resistance

AS/NZS 1530.3

AS/NZS 3837

BS 5852 Crib 5

BS5852 part 1

DIN 4102 B2

EN 1021-1/2

IMO FTP Code 2010: Part 8

NF D 60 013

NFPA 260

Önorm B1/Q1

SN 198 898 5.3 with treatment

UNI 9175 1IM

US Cal. Bull. 117 – 2013

No use of brominated flame retardants

Benefits of wool

Wool is a renewable resource

Wool is very comfortable because of its ability to absorb / give off humidity Wool is flame retardant

Wool is biodegradable

Wool is naturally soil resistant

Wool ages with grace

Quality benefits

Very good abrasion

Good lightfastness

Flame retardant

Environmental benefits

Complies with EU Ecolabel

Long life span

No use of AZO dyes, which may split off carcinogenic acrylamines

No use of dyes containing heavy metals

No content of formaldehyde

No use of brominated flame retardants

Biodegradable spinning oil

We adhere to the limits set by the Danish Environmental Protection Agency's "List of Undesirable Substances"

Complies with REACH

Reduced emissions

Greenguard and Greenguard Gold certified

For further information

kvadrat.dk

Hallingdal 65

Design: Nanna Ditzel

Type: Upholstery

Composition: 70% new wool, 30% viscose

Yarn type: Stapel

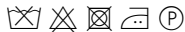
Binding: Plain

Width: 130 cm

Weight: Approximately 795 g/lin.m Repeat: None

Cleaning: Vacuuming and dry cleaning

More info: Maintenance instruction–please see website



10 year warranty  



Hallingdal 65

Price category 2
Manufacturer Kvadrat
Materials 70% New wool, 30% Viscose
Martindale 100.000
Lightfastness 7
Pilling 3



Hallingdal 65

Price category 2
Manufacturer Kvadrat
Materials 70% New wool, 30% Viscose
Martindale 100.000
Lightfastness 7
Pilling 3

TEXTILE



0100



0103



0110



0113



0116



0123



0126



0130



0143



0153



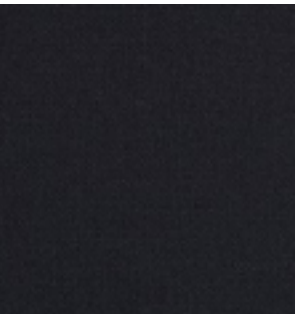
0166



0173



0180



0190



0200



0220



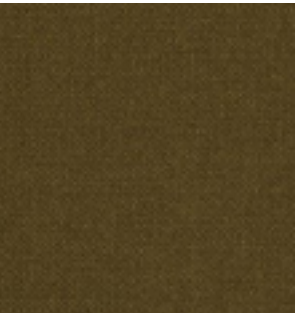
0224



0227



0270



0350

Hallingdal 65

TEXTILE

Price category 2
Manufacturer Kvadrat
Materials 70% New wool, 30% Viscose
Martindale 100.000
Lightfastness 7
Pilling 3



0368



0370



0376



0390



0407



0420



0457



0526



0547



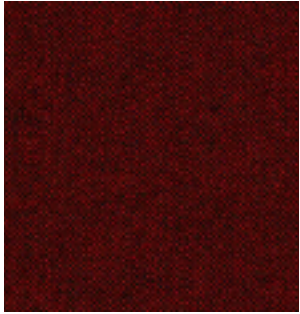
0563



0573



0590



0596



0600



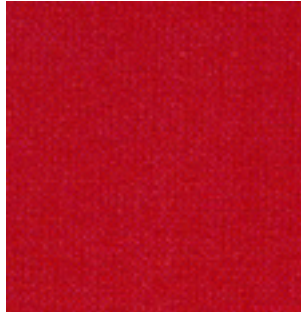
0657



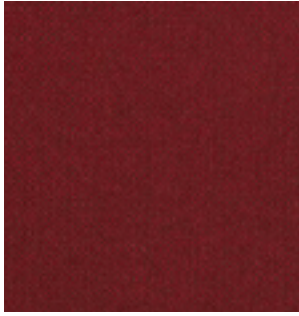
0660



0674



0680



0687



0694

Hallingdal 65

TEXTILE

Price category 2
Manufacturer Kvadrat
Materials 70% New wool, 30% Viscose
Martindale 100.000
Lightfastness 7
Pilling 3



0702



0723



0733



0750



0753



0754



0763



0764



0773



0810



0840



0850



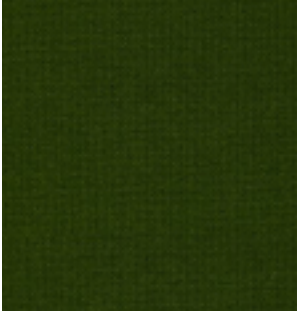
0890



0907



0944



0960

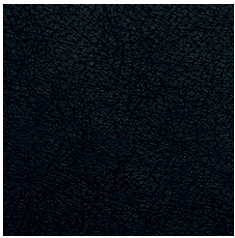


0968



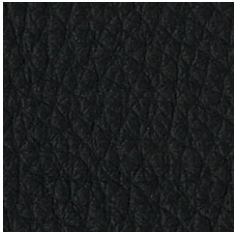
0980

BASIC LEATHER



BLACK

CLASSIC LEATHER



BLACK



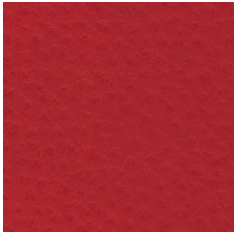
BLACK BROWN



COGNAC

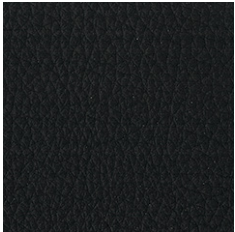


WALNUT

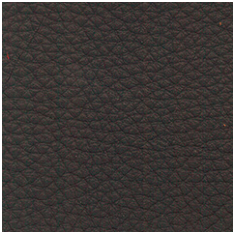


BRIGHT RED

SOFT LEATHER



BLACK



BLACK BROWN



COGNAC

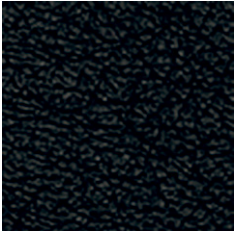


WALNUT

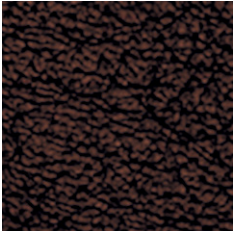


BRIGHT RED

ELEGANCE LEATHER



BLACK



BLACK BROWN



WALNUT



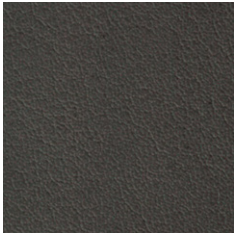
INDIAN RED

RUSTIC LEATHER



RUSTIC

SENSE LEATHER



CONCRETE GREY



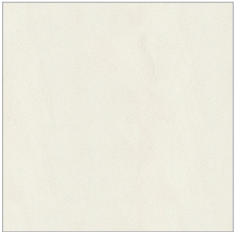
CHOCOLATE

NATURAL LEATHER



NATURAL

WHITE LEATHER



WHITE

OPTICAL WHITE LEATHER



OPTICAL WHITE